

Moorlands Primary School

Winchester Road,
West Bromwich.

B71 2NZ

Phone: 0121 556 0352

Nurturing values and communication

Newsletter June 2026

www.moorlandsprimarysch.co.uk



Friends of Moorlands Events

Friday 12th June there is a Father's Day Sale items from 50p to £5.00. This is a during in school and to give children the opportunity to buy a gift for that special person as well as experience using money in a real life situation.



Summer Fair

This year's summer fair will be held on Thursday 2nd July from 3.30 pm. Stalls include: the bottle stall, chocolate / gift stall, tin can teacher, ice-lollies, lucky dip, hook a bag etc. Last year and in the Christmas fair some of our children, who are buddy entrepreneurs, had their own stall selling the items they had made. If your child would like to do this, please let Friends of Moorlands know.

Non-uniform days: **Friday 19th June** – sweets / gifts / bottles

Friday 26th June – bring in a sealed bottle, this includes drink and toiletries

Colour Run:

Monday 13th July – Colour Run in school. Based on the success of September's Colour Run, we will be doing this again on the school field. Pupils and adults can take part. £5.00 per entry. Letter to follow with further information.

Moorlands Stars:

Spencer from Year 2 has been raising money for Birmingham Children's hospital. It was his idea to bake and he has raised £165 so far.

PE Kit reminder:

Please make sure your child has a school PE kit for PE sessions. This can be a red or white t-shirts/polo shirt and blue or black shorts/leggings. Please make sure these tops are plain and don't have logos on them.

Dates for the diary:

- 17th – 19th June Year 5 and 6 Frank Chapman residential
 - 24th June Music share Lichfield – Key Stage 2 choir
 - 29th June Sports Day – letter to follow for times weather permitting
 - 3rd July Training Day – school is closed to pupils
 - 6th and 7th July Power up – P.E. kits needed
 - 8th July Parents open evening
 - 10th July Year 6 Leavers Disco 4.30-6.30 pm
 - 13th July Colour Run – letter to follow
 - 14th July Year 6 Performance afternoon 1.30 pm
 - 15th July Year 6 Performance afternoon 1.30 pm
 - 16th July 1.45 pm Year 6 Refreshment afternoon
 - 17th July Year 6 cinema visit
 - 17th July school ends at 1.30 pm
- RETURN TO SCHOOL ON THURSDAY 3RD SEPTEMBER 8.40 AM**



Year 6 Events – July 2026

Year Six's Leavers Disco - Friday 10th July 4.30 pm - 6.30 pm.

Leaver's afternoon tea celebration – Thursday 16th July - 1.45 pm. This will be a time for us to celebrate Year Six's achievements and a chance for parents and pupils to say a farewell to the Leavers of 2026

Year 6 Leavers performance – Tuesday 14th July and Wednesday 15th July in the afternoon – start time 1.30 pm.

OPAL Lunchtime Project
We Need Your Help!

What is OPAL?
OPAL (Outdoor Play and Learning) is a programme that helps us improve playtimes for all children.

- ✔ Creativity & Imagination
- ✔ Physical Activity & Fitness
- ✔ Social Skills & Teamwork
- ✔ Confidence & Wellbeing

We are transforming our playground into a more exciting, engaging place where every child can thrive.

How You Can Help

We are collecting safe, clean, unwanted items to use for play.

- ✔ Old tyres (clean, no metal)
- ✔ Crates (plastic or wooden)
- ✔ Planks of wood
- ✔ Pots, Pans & Utensils (for mud kitchens)
- ✔ Dressing-up Clothes
- ✔ Buckets, Tubes, Containers
- ✔ Small World Toys (cars, figures)

Why It Matters

- ✔ Happier Children
- ✔ Improved Behaviour
- ✔ More Active, Healthier Lifestyles

Drop-off Information

- ✔ Please bring donations to: [School Office / Playground]
- ✔ By: [Date / Anytime During School Hours]

Please Note

- ✔ Items must be safe and in good condition
- ✔ No sharp edges, glass, or hazardous materials
- ✔ Large Items – please speak to the school first

Want to Get Involved?
We also welcome volunteers to help organise & set up play areas!

THANK YOU FOR YOUR SUPPORT!
Together, we can make lunchtimes the best part of the day!



OPAL

Moorlands has started the OPAL programme, this is a 2 year programme whereby we will transforming our outdoor areas. The aim is that we will be providing children with high quality, sustainable outdoor learning opportunities which develops the children socially and creatively. There will be letters to follow to explain how you can support us with this venture.

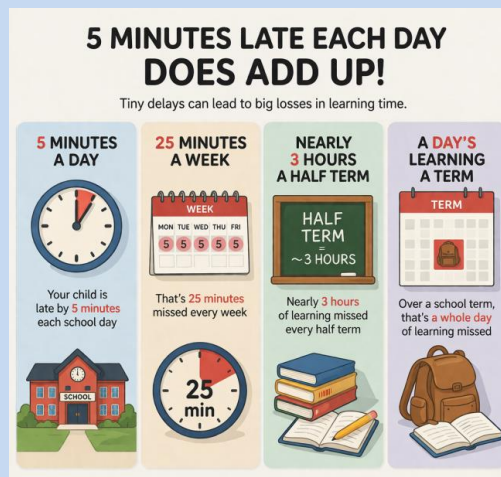
Attendance Reminders:

It is really important that you child attends school every day as missed days means missed learning opportunities, gaps in learning and opportunities to build relationships with peers. In the last newsletter lateness was highlighted as being a focus in school.

Summer term changes:

Lateness letters and Percentage Absence letters:

If your child is late into school, which means that they are not in the building by 9.00 am, they will be registered as late. To encourage punctuality if your child has 6 lates over the next term, parents / carers will receive a letter to attend a meeting to look at how we can work together to support arriving on time. When a child is late, this can be anxious for the child as the class is already settled and could have started learning. For example, if your child arrives late, they miss the morning challenge, ordering of the school dinners, if done in school and could be the start of the lesson.



Attendance:

A whole school focus this year is to increase our attendance so that we are closer to the National Average. Initiatives in school have been Extra Play Monday – if 100% of the class have been in. Pupils have enjoyed the extra physical exercise opportunity. Golden Ticket on a Friday, the pupils love the anticipation of whether their chair will have the golden ticket underneath and are respectful and happy for the winning pupil in their class. Pupils have also had the opportunity of winning the £100 voucher if your child's attendance is between 97-100%. In the second draw, a Year 5 pupil won, 110 pupils were in this draw. **To be in with a chance to win, all you have to do is attend school every day.**

Summer 1 attendance up to 22nd May 2026 is: 94%

Each winning class of the week also receives £5.00 so that in the summer term, pupils can decide what they would like to do with the money as a class.

Current standings are:

Reception - £10.00

Year 1 - £15.00

Year 2 - £20.00

Year 3 - £10.00

Year 4 - £60.00

Year 5 - £25.00

Year 6 - £10.00

Is your child's attendance below?

Below 96%



If your child's attendance is below 96% you will receive a letter letting you know that this is being monitored and you will have your child's attendance profile attached so that you are informed of when these absences are.

If you have had a Leave of Absence, we are aware of the unauthorised absence but it is important that you understand the impact this could have on your child's overall absence for the term / year.

Below 95%



If your child's attendance is below 95% you will receive a letter letting you know that this a concern and you will be asked to attend a meeting so that we can work together to support attendance and identify reasons for the absence.

Below 93%

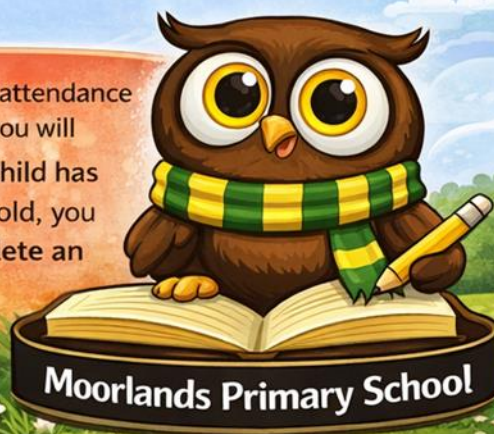


If your child's attendance is below 93% you will receive a letter letting you know that this is a concern and you will be asked to attend a meeting to complete an Attendance Support Plan so that we can work together to support attendance.

Below 90%



If your child's attendance is below 90% you will receive a letter letting you know that your child has now reached the persistent absence threshold, you will be asked to attend a meeting and complete an Attendance Contract which will need reviewing every 2 weeks.



Moorlands Primary School