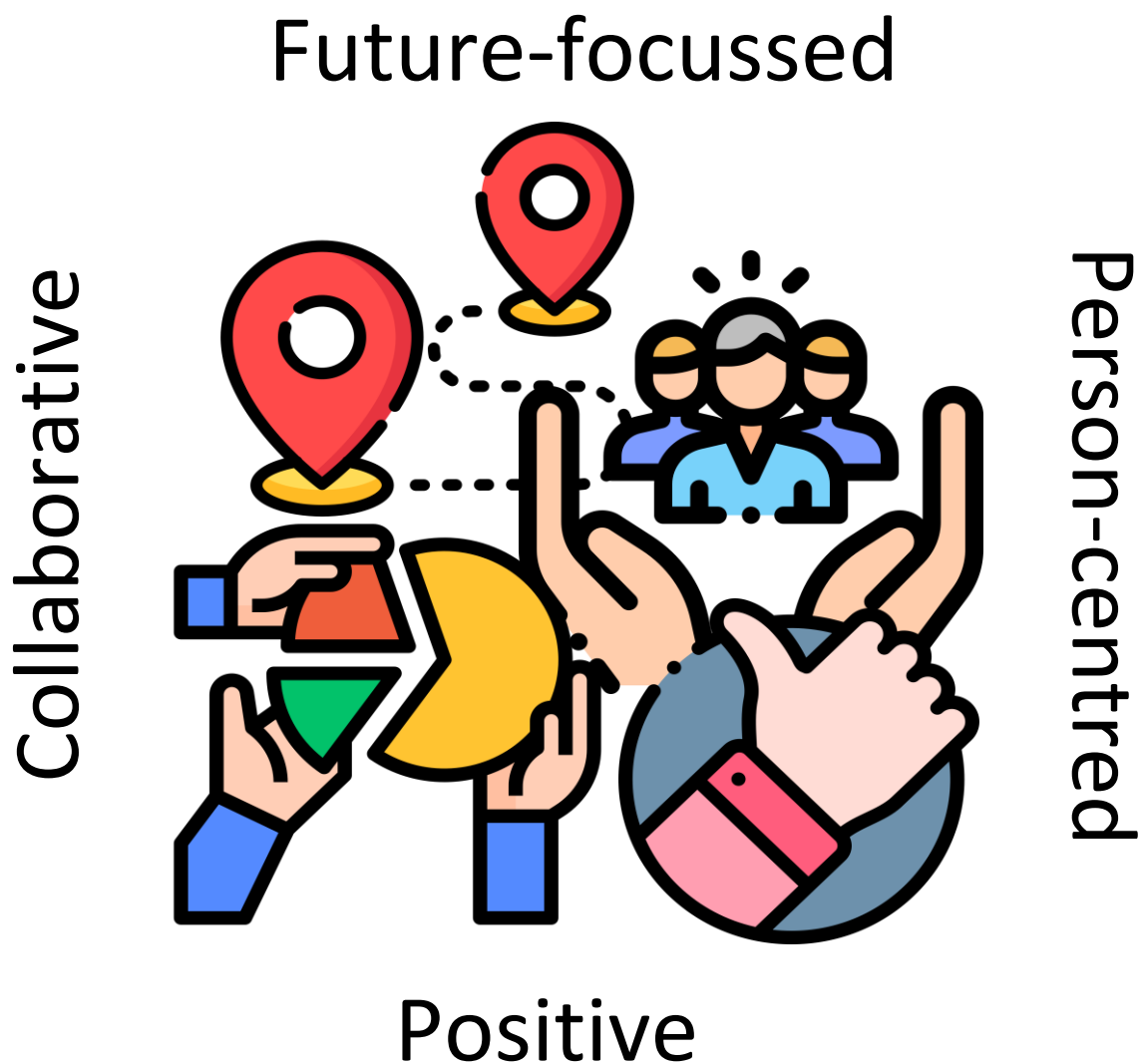


Community Assessment Meeting Pack

The parent and young person, and their hopes for the future, are the focus of every Community Assessment Meeting (CAM)



Before the CAM

The purpose of a CAM meeting is to talk about your child and how things are going for them at the moment.

You may want to read through the questions we ask in the CAM on the next page beforehand and make some notes.

You may also want to bring some pictures on your child to show us in the meeting. These could be of:

- Their favourite toys/games
- Things they like to do at the weekend
- Important people in their lives
- Things you and your child have done together

You can bring these pictures to the meeting or send them to the school/ the Inclusion Support professional working with your child before the meeting.

If you are happy to, these pictures can then be used in our reports.

CAM Crib Sheet

The following pages outline to questions explored in the CAM, providing guidance for each section to help you make notes and prepare for the meeting.

Who else is important to XX?

What are your hopes and dreams for XX?

1. Getting a job
Contributing to Society.

2. Being independent.

3. Belonging to the Community
Making Friends.

4. Health & Well-being

This considers aspirations linked to:

- Hopes for friendships and role in the community
- Jobs or fields of interest for study
- Understanding of their health and role in this
- Level of independence, any specific milestones we might want to aspire to

What are XX's hopes and dreams for their future?

- You might want to ask XX to think about what they would like life to be when they are older before the meeting, looking at these four areas too

What do we like and admire about XX?

What is important to XX?

- *This is what XX would say, not what we as adult's think would be useful for them to have*

What is important for XX to have to support their needs/learning?

- *This is the support we feel it would be useful for XX to have to support them*

What is working well?

What needs to be developed/ What needs to improve? (We will also look at XX's strengths)

Cognition and Learning

Thinking about skills such as:

- Reading
- Writing
- Maths
- Memory (short and long term)
- Ability to recognise when an answer is wrong and ask for help

Speech and Language

Thinking about skills such as:

- How they talk (can they take turns in conversations, are they chatty/quiet, do they use good language)
- Can XX tell us what they need
- XX's understanding of instructions and what we say
- XX's skills when talking to others (eye contact, understanding what they mean)

Social, Emotional, Mental Health

Thinking about skills such as:

- Ability to make, keep and repair friendships
- Ability to understand and share how they are feeling
- How they cope with difficult feelings
- Her behaviour when they are upset/worried/cross
- Any sensory needs they may have linked to sight, hearing, touch etc
- Ability to understand how others are feeling

Physical, Sensory Impairments and Medical Needs

Thinking about skills such as:

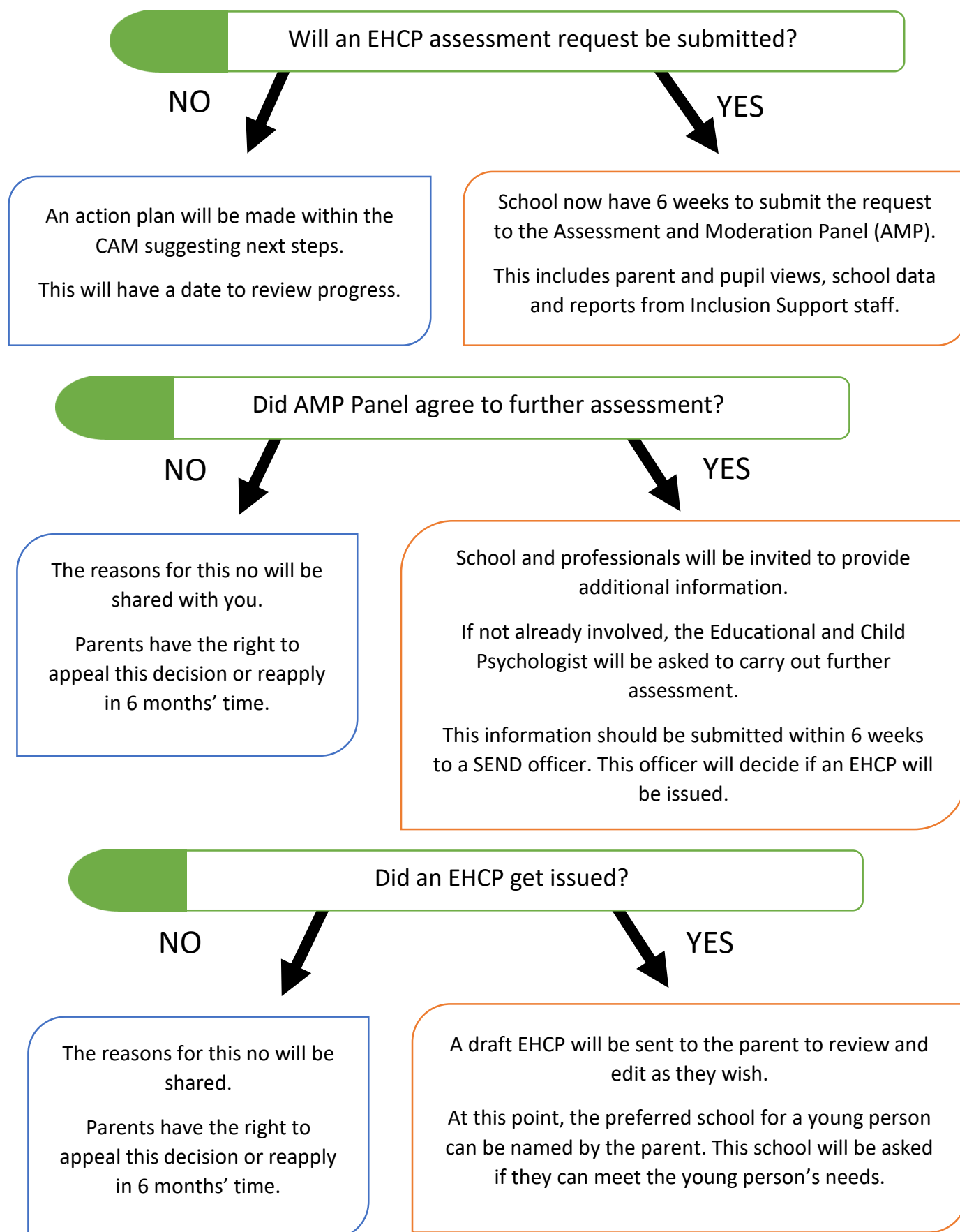
- Hearing
- Vision
- Balance/movement
- Handwriting/eating
- Sleeping

Self-care and Independence

Thinking about skills such as:

- Keeping themselves safe
- Getting washed/dressed
- Keeping their room tidy
- Organising her things for school

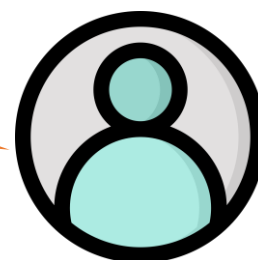
What happens after the CAM?





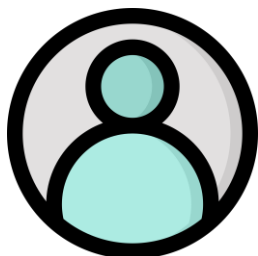
Questions and Information

Where can I go for further support with this process?



For further information and support, you can speak to:

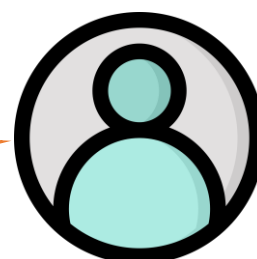
- The SENCO at your school
- Sandwell's SEND Information service at <https://www.sandwellsendiass.co.uk/> or 0121 500 4010



I would like another family member/ my friend/ another adult to support me in the CAM, can they attend?

Yes! The CAM process is led by you and your child, anybody who is important to you both should be invited if you want them to. Just ask your school SENCO to invite them.

Can I have someone translate for me if English is not my first or most confident language?



Yes! If you have a family member or friend who you would like to translate during the CAM, bring them along. Otherwise you can ask the school SENCO to arrange this for you.

Terms to remember:

<p>CAM</p> <p>‘Community Assessment Meeting’</p>	<p>A meeting with the parent and child at the centre.</p> <p>The meeting looks at hopes for the future and current strengths and needs for a young person.</p> <p>At the end, the group decides if an EHCP assessment request will be submitted.</p>
<p>AMP</p> <p>‘Assessment and Moderation Panel’</p>	<p>This is the panel which decides if further EHCP assessment will occur for a young person.</p> <p>The panel looks at the needs of a young person and the support they get already in school.</p>
<p>EHCP</p> <p>‘Education, Health and Care Plan’</p>	<p>This is a document which captures the educational, health and care needs of a young person.</p> <p>It can come with extra support and funding and is a legal document.</p> <p>This document is reviewed yearly and can support a child up to the age of 25.</p>
<p>ECP</p> <p>‘Educational and Child Psychologist’</p>	<p>This is a professional who supports in the assessment of a child and young person. They look at a young person’s strengths and needs across many areas and advise school in how best to support a young person.</p>
<p>SENCO</p> <p>‘Special Educational Needs Co-Ordinator’</p>	<p>This is a member of staff in school who will be helping teachers to support a child with additional needs.</p> <p>They will be in charge of arranging the CAM and submitting the paperwork to AMP.</p>

Key Websites

Parent Support Services	<p>https://www.sandwellsendiass.co.uk/</p> <p>SENDIASS can offer support to parents at any point. They are not linked to schools and can support you in meetings, completing paperwork or just listen to your worries.</p>
Information on processes	<p>https://fis.sandwell.gov.uk/kb5/sandwell/directory/localoffer.page</p> <p>The Sandwell Local Offer provides information on the EHCP process and Sandwell's plan for supporting all children with additional needs</p>
Information on school choices	<p>https://fis.sandwell.gov.uk/kb5/sandwell/directory/results.action?familychannel=3_15</p> <p>This link will take you to a directory of special schools in Sandwell</p>
Information on Inclusion Support	<p>https://fis.sandwell.gov.uk/kb5/sandwell/directory/service.page?id=m9EQ-bpK_jA</p> <p>www.sandwell.gov.uk/EducationalPsychologyTeam</p>